



Logging and flashing with HP Tuners Devices.

For TDN access you will need to add us as your tuner and an invitation code will be provided to you.

For flashing with the RTD device here is the software if you are set up for such.

<https://files.hptuners.com/RTD%20Flasher/RTD%20Flasher.msi>

For Datalogging with HPT devices here is the software for logging, you will be using VCM Scanner

[https://files.hptuners.com/VCM%20Suite/VCM%20Suite%20\(Beta\).msi](https://files.hptuners.com/VCM%20Suite/VCM%20Suite%20(Beta).msi)

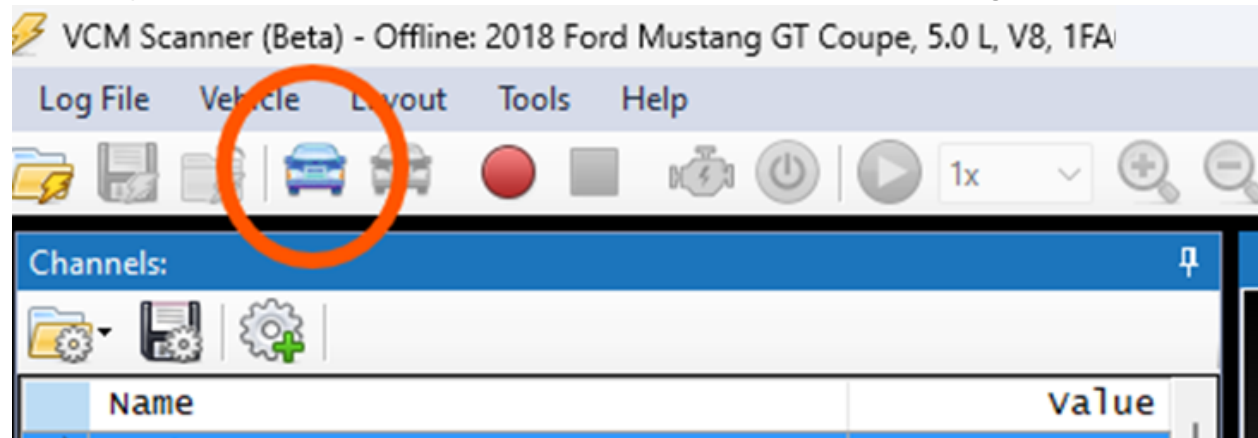
Here are the drivers for your computer using an MPVI2 or newer device including the RTD.

https://files.hptuners.com/pub/drivers/CDM21228_Setup.zip

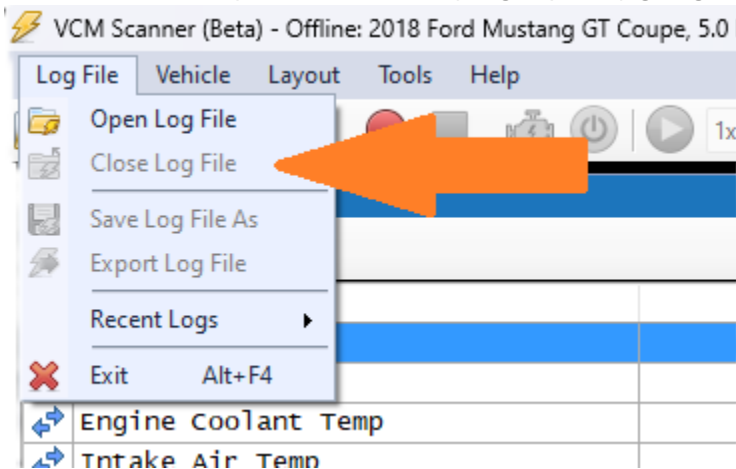
Sometimes when logging will not load all PIDs with HPT devices and they will go grey on the scanner showing they aren't logging. To fix that you will need to enter the operating system identifier. We can provide you with an identifier for your vehicle in this situation.

If you need to enter your osid here are the steps.

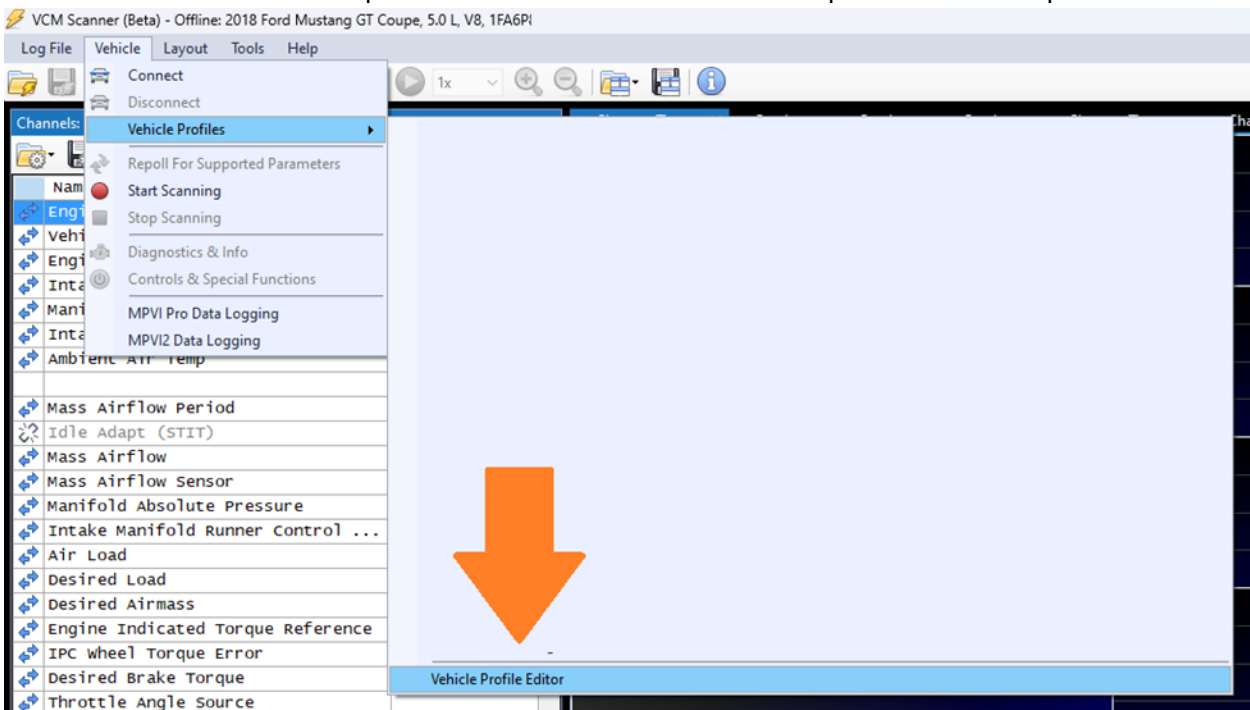
#1 Open vcm scanner and connect then disconnect from the vehicle using this button



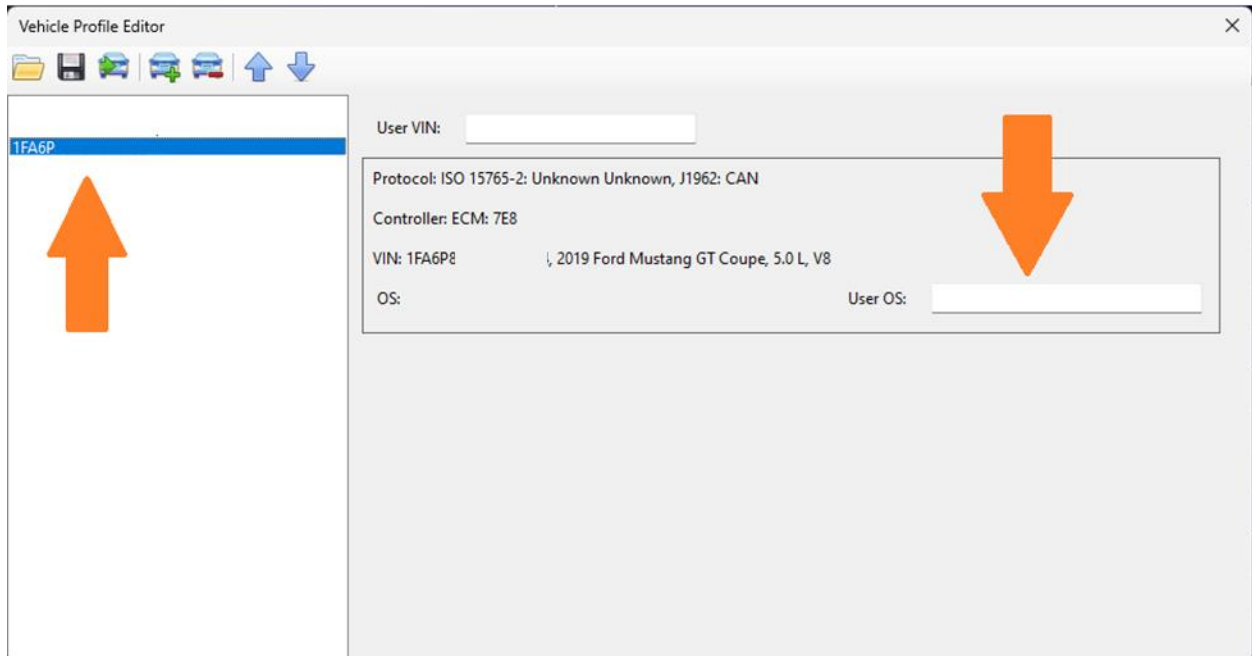
#2 Make sure you don't have any logs open by going to



#3 Go to the tab vehicle profile editor under Vehicle > vehicle profiles > vehicle profile editor

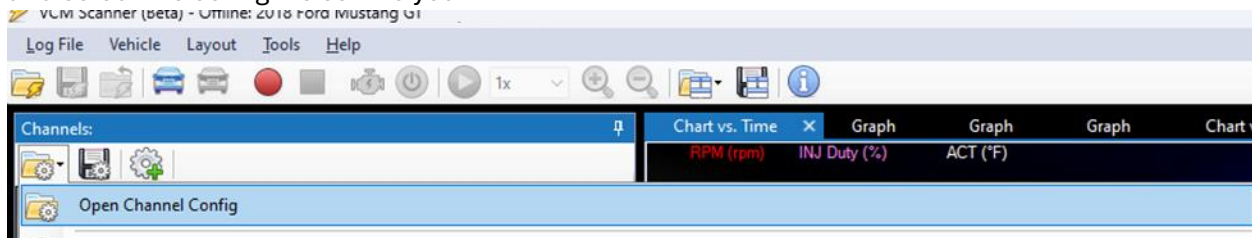


#4 Once you click that a new box will pop up. Click on your vin number then go to the box labeled user os and enter the provided osid then close the box.



#5 After doing this you can now reconnect to the car.

#6 To load your pids for your car you will go to the channels box > open channel config > and select the config file sent to you.



After that all there's left to do is start logging. You can do that by hitting the red dot to start recording and the square to the right of it to stop logging. Save the log and name it and send it over.

Logs can be sent to Tuning@hpjperformance.com

Please include

1. Full name.
2. Invoice number.
3. Information pertaining to logs.
4. Time slips if applicable.
5. Any Cel's or otherwise if applicable.